

The Challenge

- How can an educational application support, integrate within, and measure the *total state*?
- How can the learner maintain his/her identity and integrity from environment to environment?

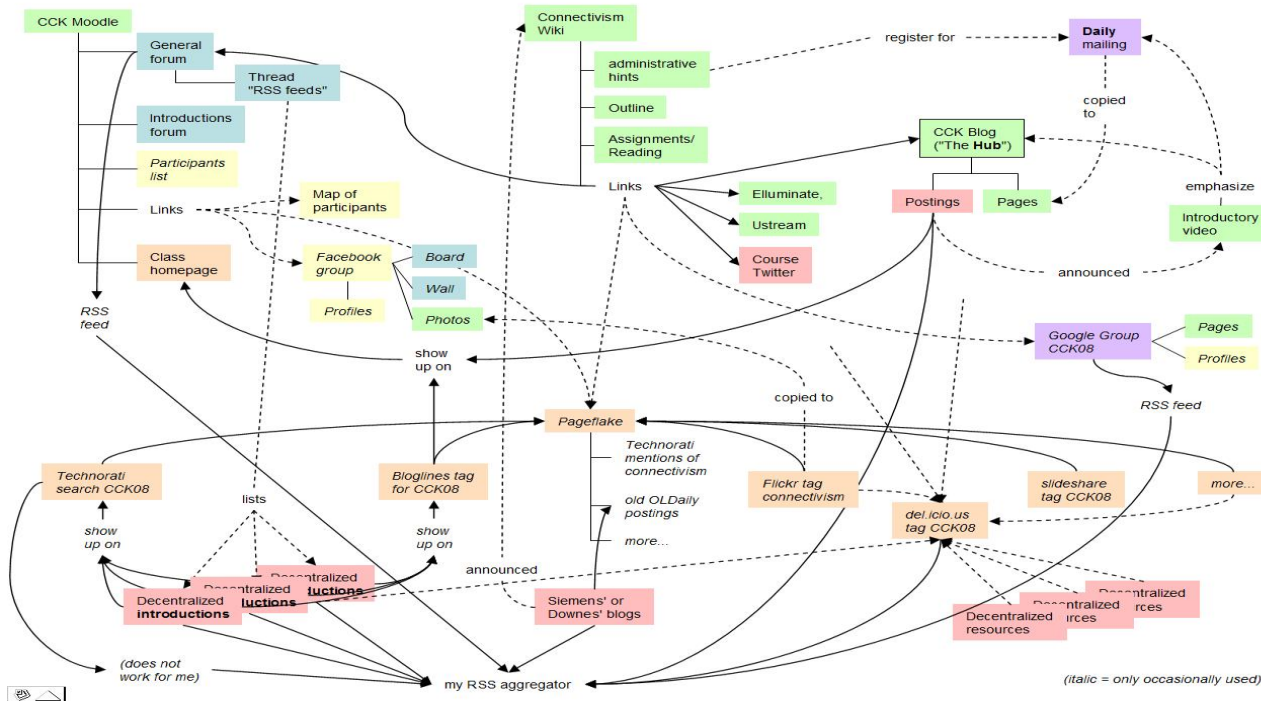
1. Three Trends
2. Interoperability
3. Moodle Roadmap
4. Modern Learning
5. Extending Moodle

Three Trends

- MOOCs
- Learning Analytics
- Personalized Learning

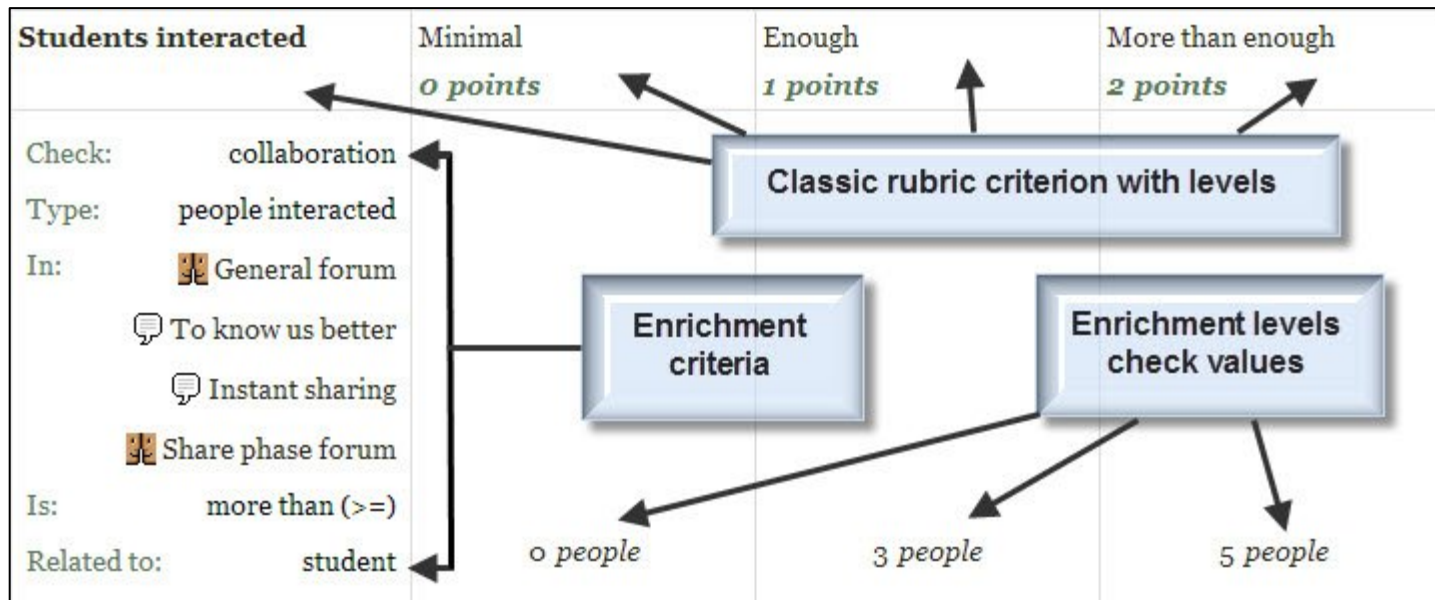
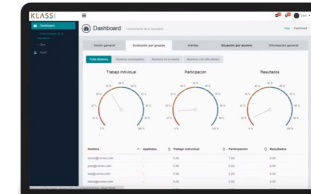
MOOCs

- Massive
- Online
- Open
- Course



Learning Analytics

- Predictive Analytics
- Recognition Tasks



Personalized Learning

- Rules-Based Events (like notifications)
- User Models
- Adaptive Learning

Recognition Networks

The "what" of learning



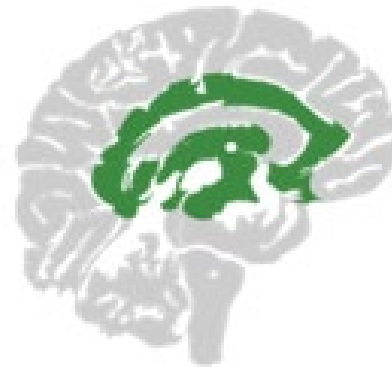
Strategic Networks

The "how" of learning



Affective Networks

The "why" of learning

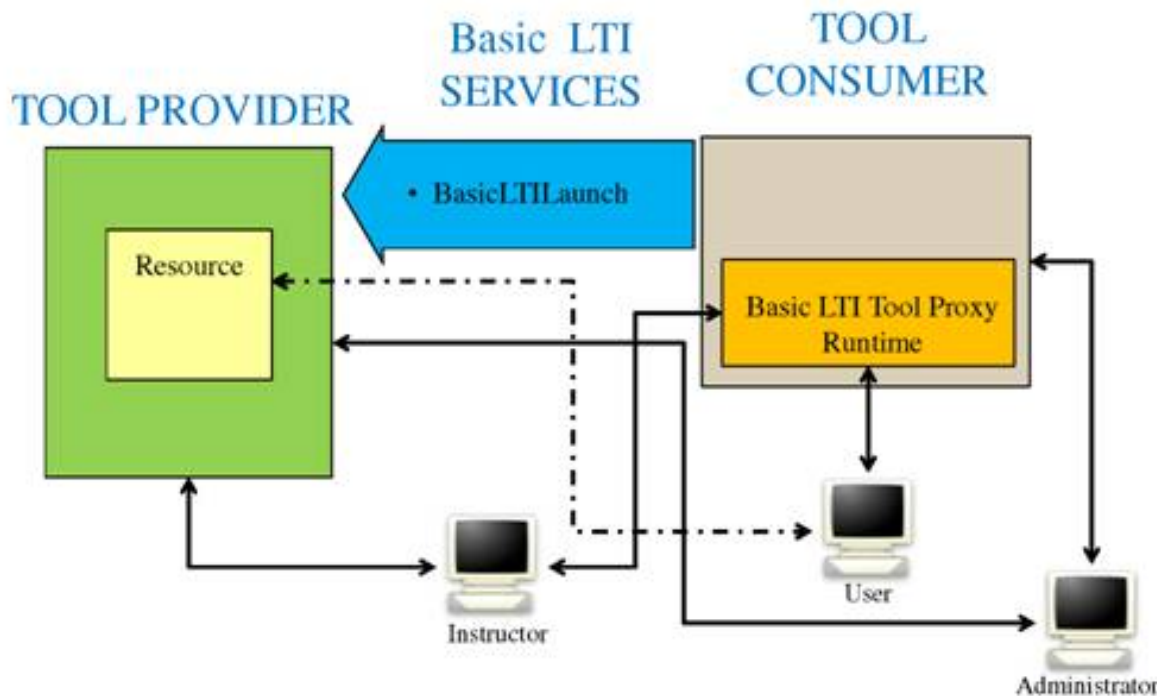


Interoperability

- Learning Tools
- Cloud Storage
- Authentication

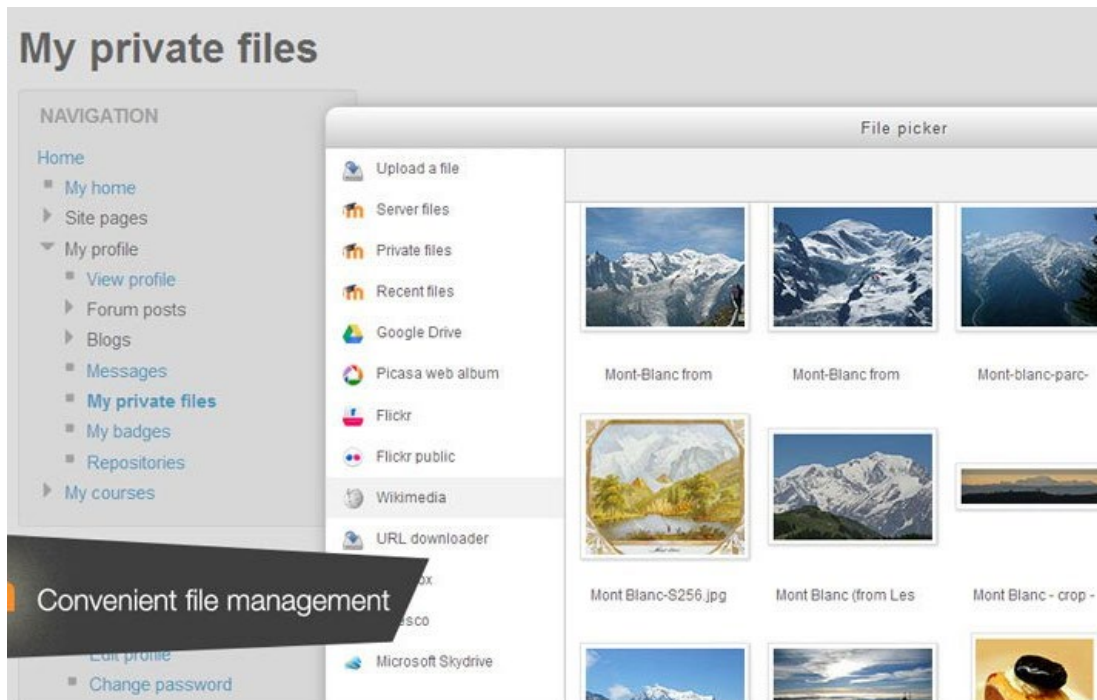
Learning Tools

- LTI Producer – provides features
- LTI Consumer – connects to features



Cloud Storage

- Cloud hosting of Moodle
- File management



The screenshot displays the 'My private files' interface in Moodle. On the left, a navigation menu lists various site sections, with 'My private files' highlighted. A 'File picker' dialog is open, showing a list of file sources on the left and a grid of image thumbnails on the right. The thumbnails are labeled with names like 'Mont-Blanc from', 'Mont Blanc-S256.jpg', and 'Mont Blanc (from Les'. A dark banner at the bottom left of the screenshot contains the text 'Convenient file management'.

My private files

NAVIGATION

- Home
 - My home
 - Site pages
 - My profile
 - View profile
 - Forum posts
 - Blogs
 - Messages
 - My private files**
 - My badges
 - Repositories
 - My courses

File picker

- Upload a file
- Server files
- Private files
- Recent files
- Google Drive
- Picasa web album
- Flickr
- Flickr public
- Wikimedia
- URL downloader
- Microsoft Skydrive

Mont-Blanc from

Mont-Blanc from

Mont-blanc-parc-

Mont Blanc-S256.jpg

Mont Blanc (from Les

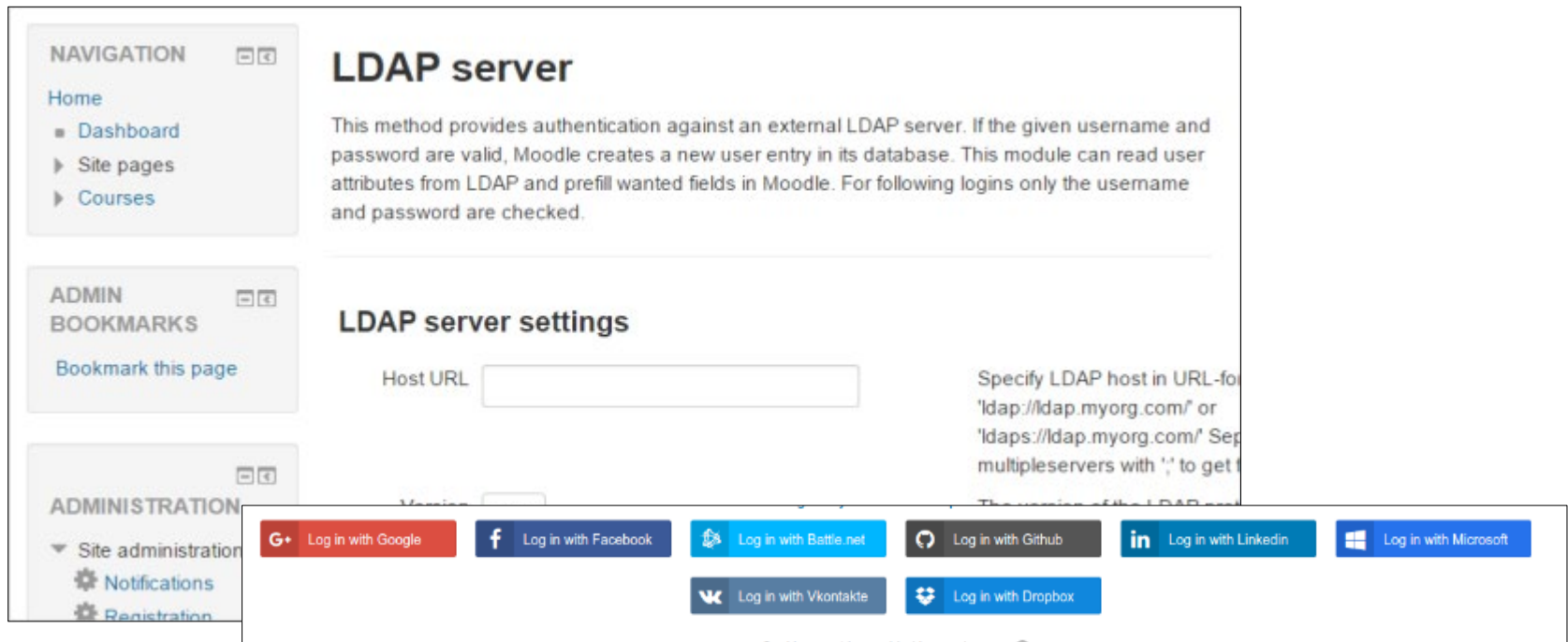
Mont Blanc - crop -

Convenient file management

Change password

Authentication

- Basic Moodle Authentication / Moodle Network
- Authentication APIs / LDAP
- Social Network Authentication



The screenshot shows the Moodle administration interface for LDAP server settings. On the left, there are navigation and administration menus. The main content area is titled "LDAP server" and "LDAP server settings".

NAVIGATION

- Home
 - Dashboard
 - Site pages
 - Courses

ADMIN BOOKMARKS

- Bookmark this page

ADMINISTRATION

- Site administration
 - Notifications
 - Registration

LDAP server

This method provides authentication against an external LDAP server. If the given username and password are valid, Moodle creates a new user entry in its database. This module can read user attributes from LDAP and prefill wanted fields in Moodle. For following logins only the username and password are checked.

LDAP server settings

Host URL

Specify LDAP host in URL for 'ldap://ldap.myorg.com' or 'ldaps://ldap.myorg.com' Separate multiple servers with ',' to get the list of servers.

Log in with Google, Log in with Facebook, Log in with Battle.net, Log in with Github, Log in with LinkedIn, Log in with Microsoft, Log in with Vkontakte, Log in with Dropbox

Moodle Roadmap

- Outcomes and competencies
- Learning plans
- Learning processes
- Content and OER

<https://docs.moodle.org/dev/Roadmap#Management>

Outcomes and Competencies

[Home](#)
[Users](#)
[Fox McCloud](#)

[Learning plans](#)

Learning Plans

Active Draft Completed

Plan	Actions
First Year Medicine	Edit v
My Personal Plan	Edit v

Add learning plan

Edit
Delete
Competencies
Request approval
Review request

Evidence of Prior Learning

Name	Summary	Linked competencies	Actions
RHCE	Redhat Certified Engineer v3 CERTV4_20150404.pdf www.redhat.com/verify/2324-234-2433-432-42	15	Edit v

Add evidence

Edit
Delete
Competencies

Request learning plan approval

Status of review

Learning Plans

Home > Users > Fox McCloud > Learning Plans > First Year Medicine

[Home](#)
[Users](#)
[Fox McCloud](#)

[Learning plans](#)

Learning Plan: First Year Medicine

[review comments](#)

Due date: 21/2/1993

Competency	Status	Proficient	Review status	Evidence	Actions
Can eat icecream	-	No	In progress	Course in progress: Ben and Jerrys BI	Edit v
Can cram for 24 hours	-	No		-	Edit v
Can party hard	Met	Yes		RCHE	Edit v
Can remove an appendix	Met	Yes		Course completed: Appendix removal APDX	Edit v

New badge

Home > Site administration > Badges > Manage badges > New badge > Completing a set of competencies

Site administration

Badges
[Manage Badges](#)

Completing a set of competencies

Language Variation and Change *ACELA1475*

X

Understand that languages have different written and visual communication systems, different oral traditions and different ways of constructing meaning.

Language for interaction *ACELA1476*

X

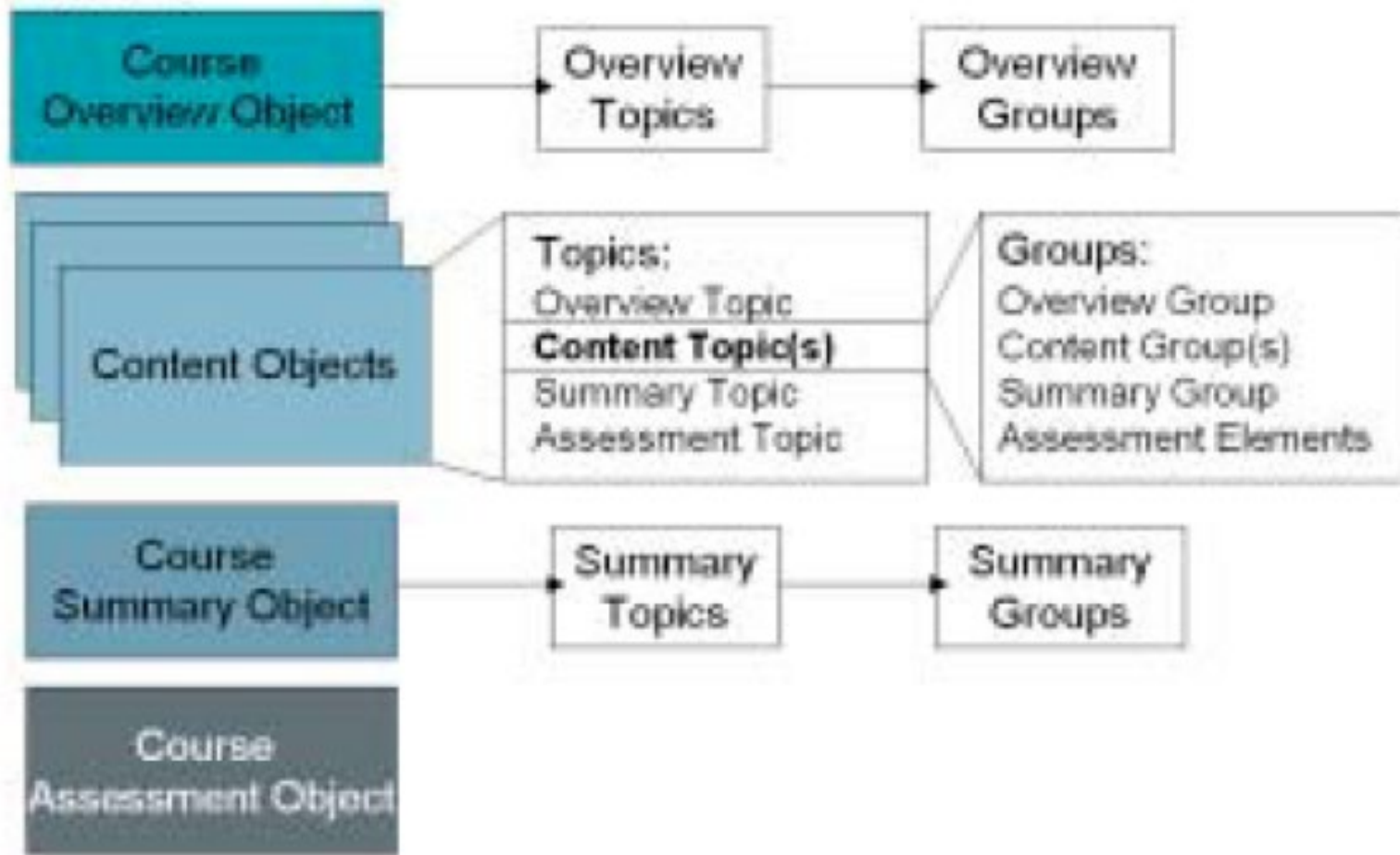
Understand that successful cooperation with others depends on shared use of social conventions, including turn-taking patterns, and forms of address that vary according to the degree of formality in social situations

[Add competencies](#)

Competencies must be complete by Enable

This criterion is complete when...

Learning Processes



Content and OER



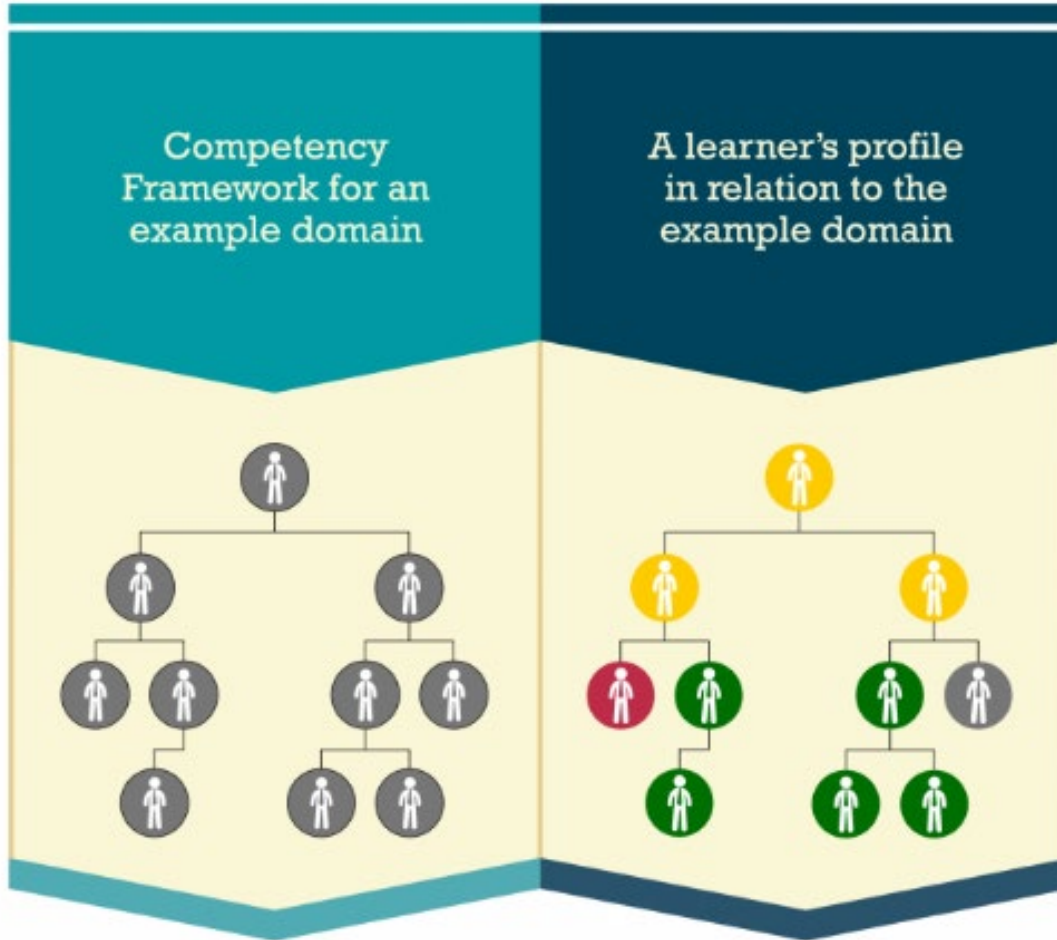
Modern Learning

- Personal Learning Records
- CASS
- Docker

Personal Learning Records

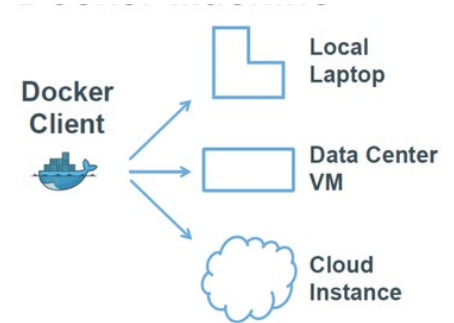


CASS



Competency and Skills System

Docker



The machine running the Docker server is called the Docker host

DOCKER HOST

LINUX

Both have Different IP within same Linux Machine



communicates with the Docker server using the REST API

MAIN TASKS

1. RUN AS A DAEMON
2. BUILDING IMAGES
3. DOWNLOADING IMAGES
4. STARTING CONTAINERS
5. STOPPING CONTAINERS
6. REST API FOR REMOTE MANAGEMENT

Extending Moodle

- Simulations and Work Environments
- Employment and Work Opportunities
- Personal Learning Environment (PLE)

Sims and Work Environments

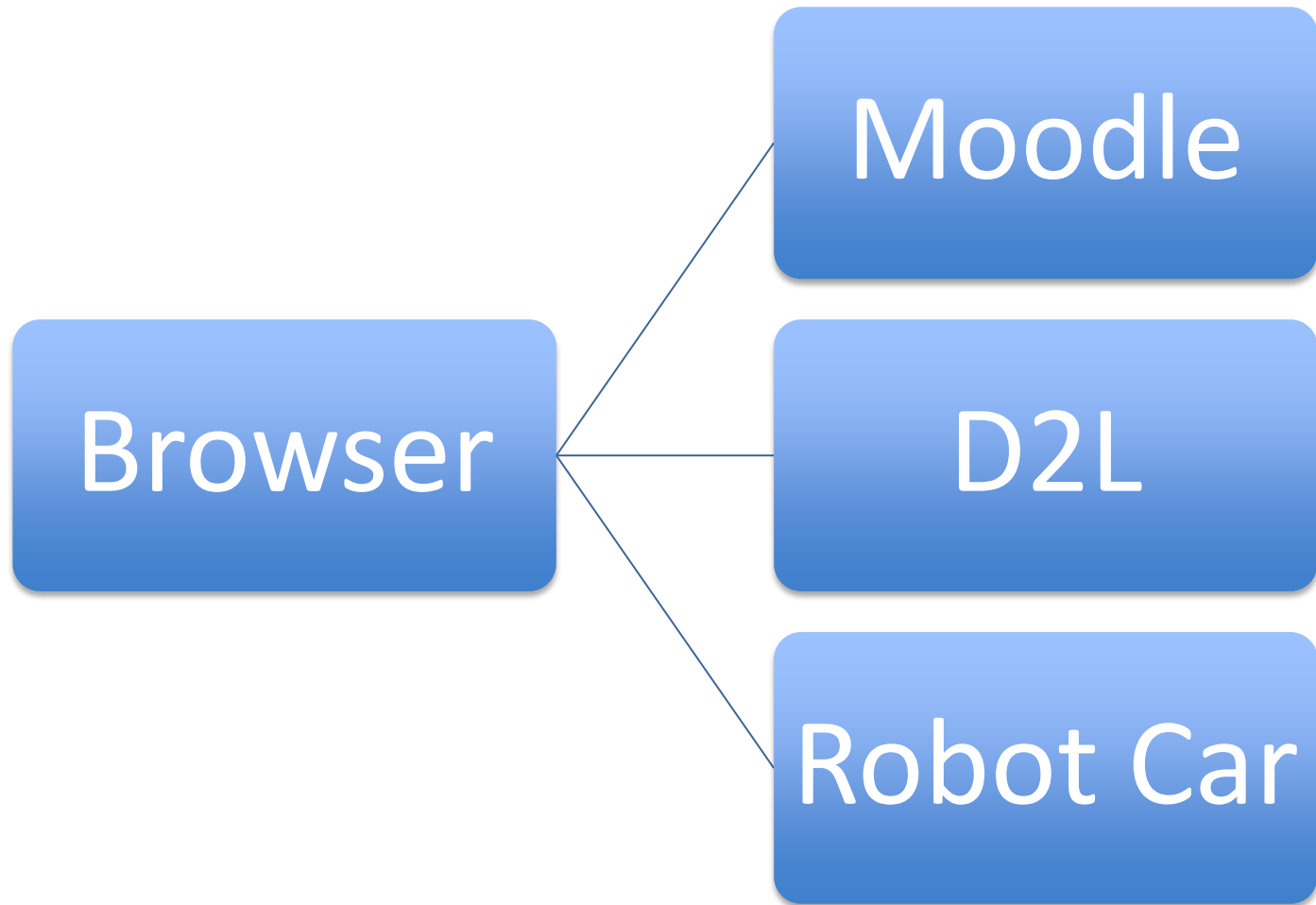


SL00DL3
71D07S

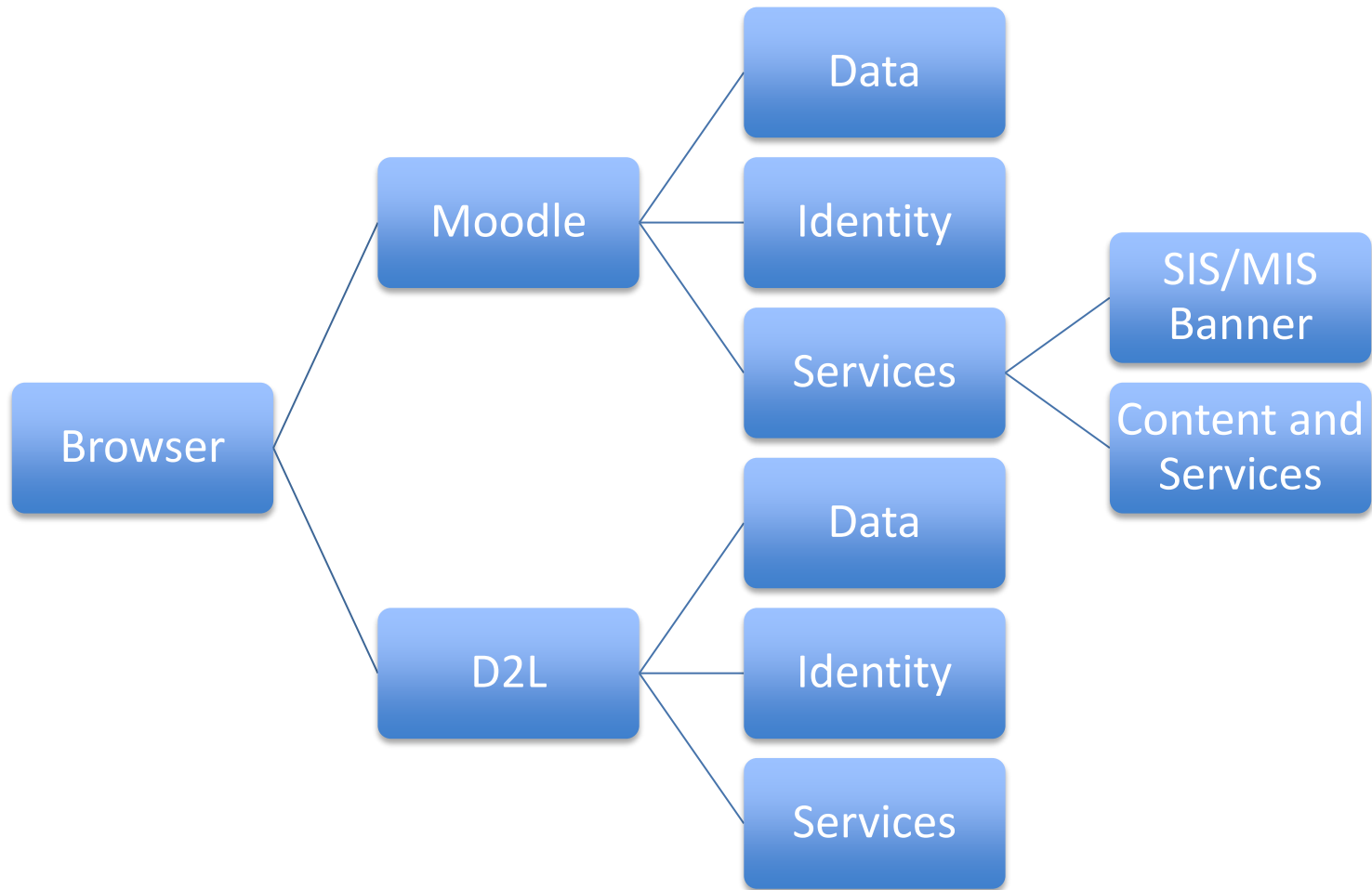
Employment and Opportunities



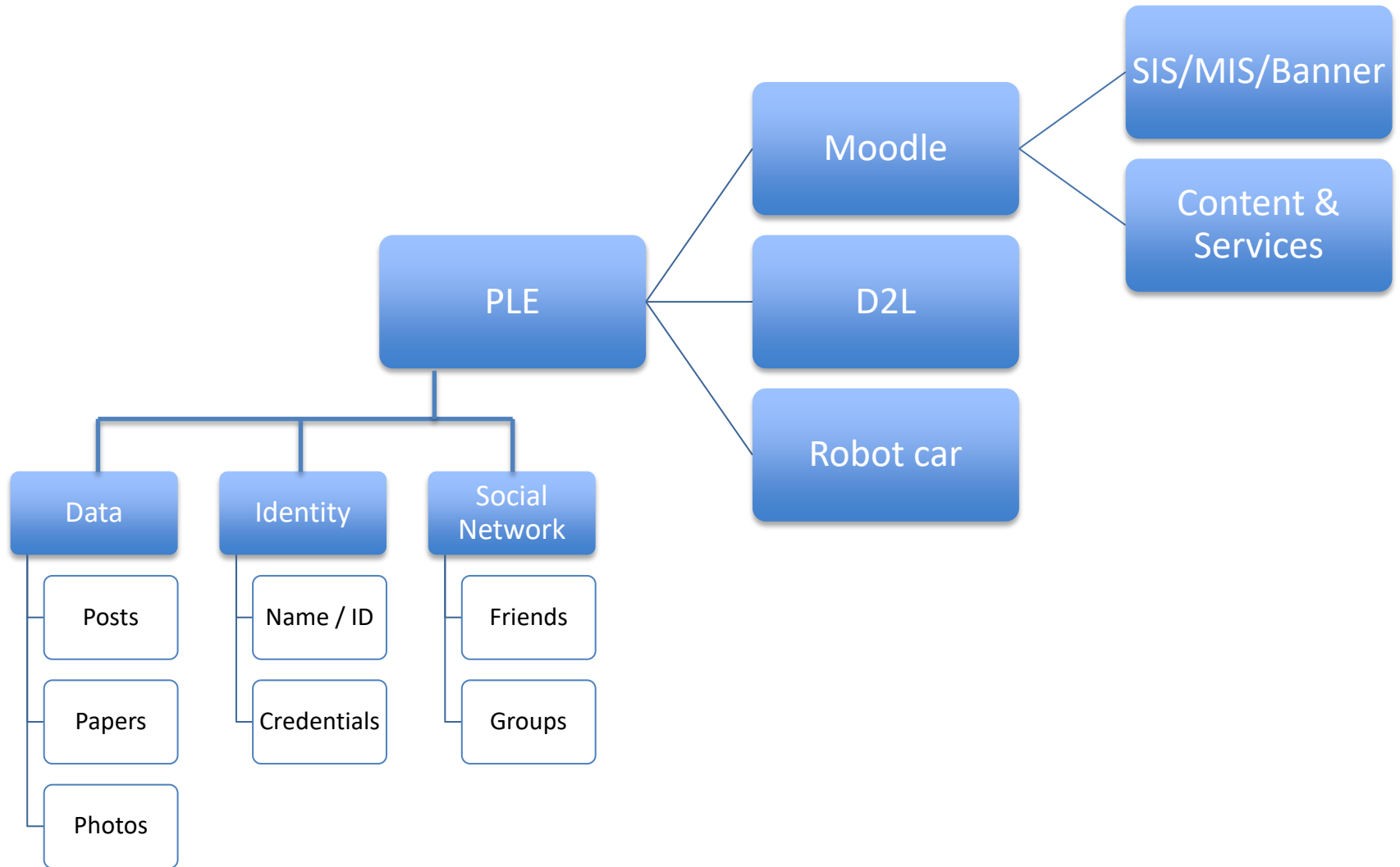
The Network in the LMS

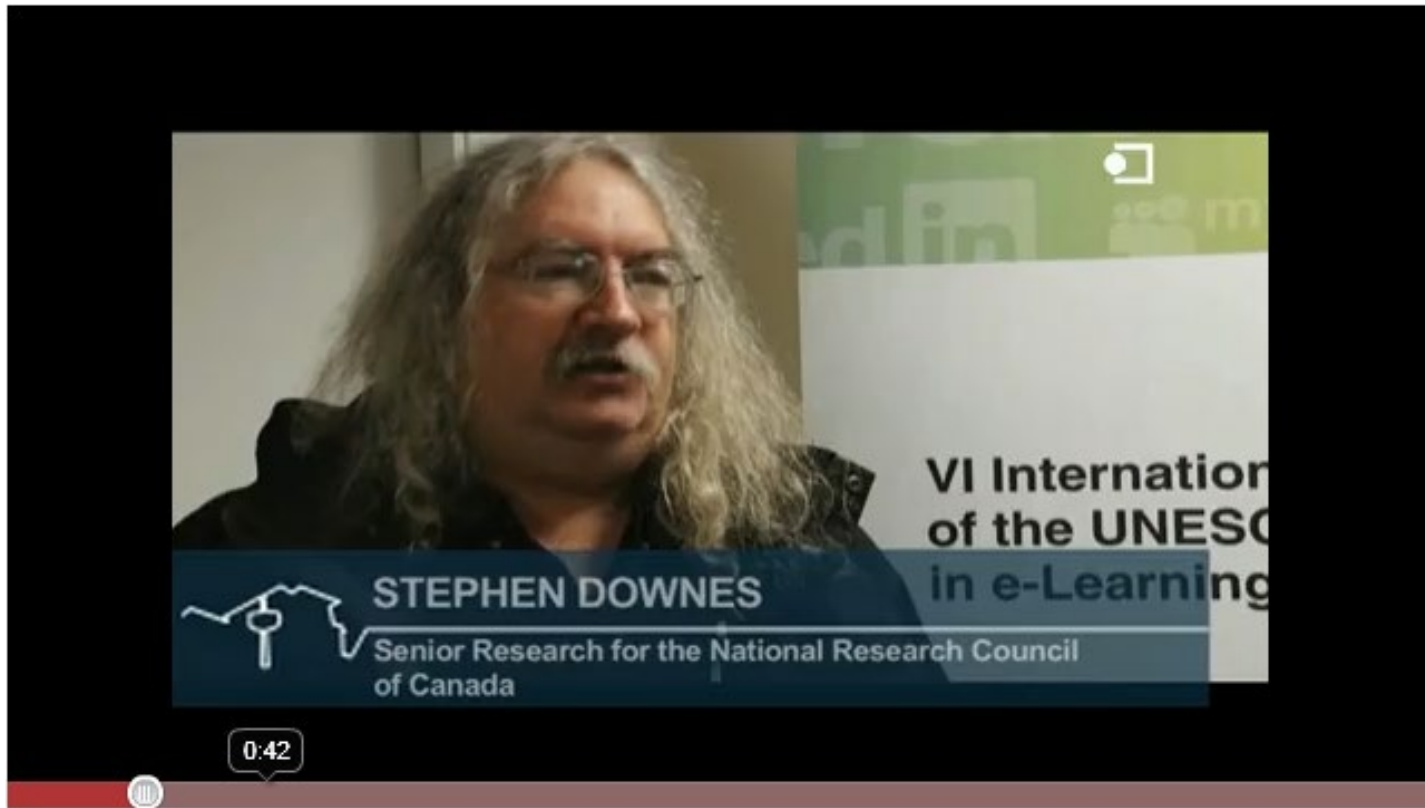


The Network in the LMS



The PLE in the Network





<http://www.youtube.com/watch?v=X0il0pgTUx0>

- <http://www.downes.ca>

Stephen Downes